



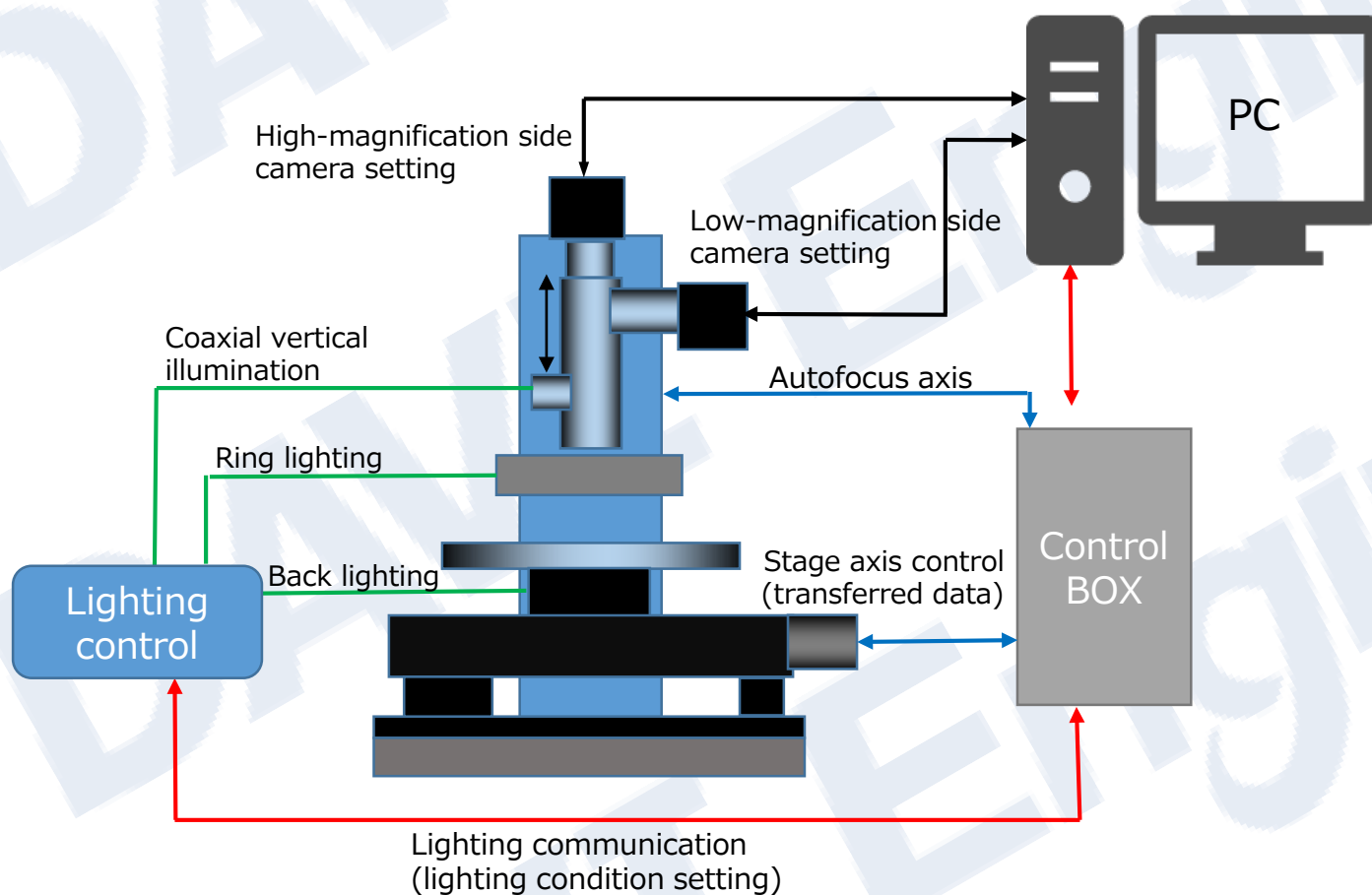
- **DAVI OPCC-System** Integration of setting conditions for camera, lighting, & stages and sequence control (DAVI OPTical&Camera Control System)

This system, based on **Daitron**'s conventional **technologies in precise motion control** and **equipment introduction/system integration & control technologies**, integrates and controls camera/lighting conditions, and creates recipes of all these imaging conditions and operates the program according to the work type.

It obtains highly precise and realistic images and provides an overwhelming degree of accuracy in length-measuring performance and image processing determination.

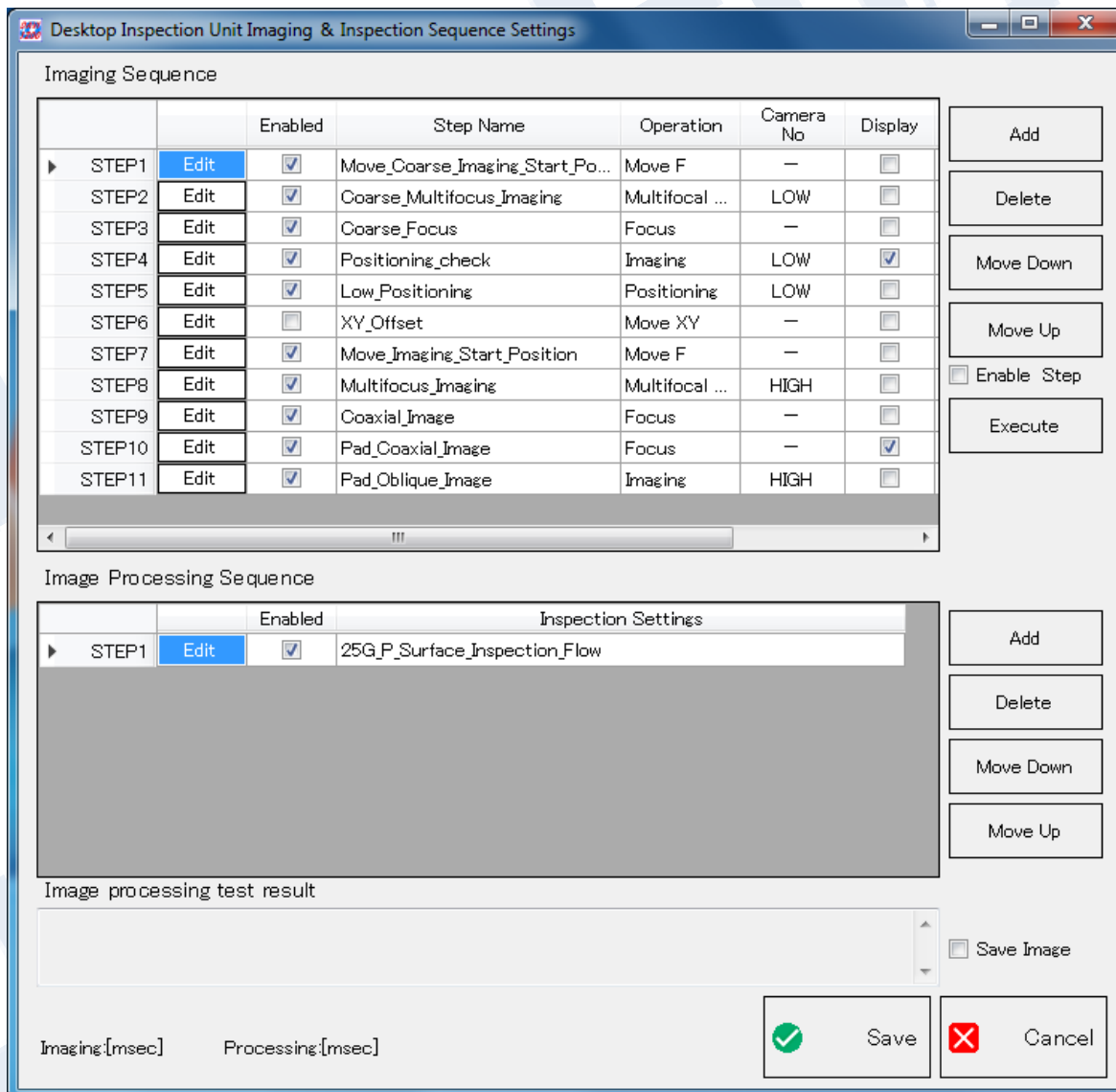
- **System image**

*Integrates and controls the setting conditions for all imaging related equipment such as camera, lighting, step scrolling, and focus. They can be made into a recipe as an imaging condition.



● Imaging condition setting display example

● May be different from the real thing



● Recipe creation setting display example

● May be different from the real thing

