

icore

Innovation to the Core

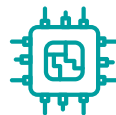


iFocus Auto Focus Sensor

IT-AF-MBK1 & IT-AF-MBK2



Auto Focus Function
Optical Triangulation type



High-speed FPGA-based
Capable of focus detection to Z-axis control



Fast Sampling Rate
Up to 1.2kHz



Real Time Auto Focus
Applicable in line scan through high-speed tracking



Wide Capture Range
±1,500µm



Flexible Customization
From Optical Lenses to AF Sensors and Z-axis Actuators

Specifications

Model		IT-AF-MBK1	IT-AF-MBK2
Sensing Type		Optical Triangulation	
Sampling Rate		Up to 1.2kHz	
Capture Range		±1,500μm	
Precision	Repeatability	<0.2μm	
	Linearity Error	<0.5%	
Laser	Wavelength	655nm / 685nm / 780nm	
	Laser Class	Class 1	
	Light Pattern	Line Laser	
Function	AF Sensor	Auto Exposure / Auto Laser Control	
		Laser Brightness Control by PD Feedback	
		Support Real-time Graph Display	
	Tracking Mode	Motion Control	
	Motion Control	OFF / Single / Continuous	
		Support Jog /Absolute / Incremental Move	
		Support HW Limit & SW Limit	
Interface		Auto Calibration	
Interface		RS-485(Up to 921,600bps)	

Dimensions (mm)

